

# ROSELEIGH

## HOMES



### House & Land Package

**Lot 37 Fetlock Drive, Beaconsfield- 1050m2**  
Acreridge Estate

#### Alma- 30.27sq Total Area

- 2.7m ceiling height throughout, with feature 2.40m ceiling heights to Entry, Kitchen & Pantry
- Bagged & painted brickwork and BGC Nuline Weatherboard features to facade
- Generous Meals/Living Area with 4.3m vaulted ceiling and raked highlight window
- Caesarstone (M0 or M1 Range) to Kitchen
- Freestanding bath and wet room to bathroom
- Feature wall entry with curved edges and built in mud space
- ABI tapware throughout home
- Quality floor coverings throughout entire home
- Double-glazed windows
- Full ducted heating and refrigerated ducted cooling
- Separate Powder Room and Lounge
- 3.8kw Solar System

Contact Riley- Riley@roseleighbomes.com.au

0456 881 899

**Built for you.**

03 5622 6777

roseleighbomes.com.au

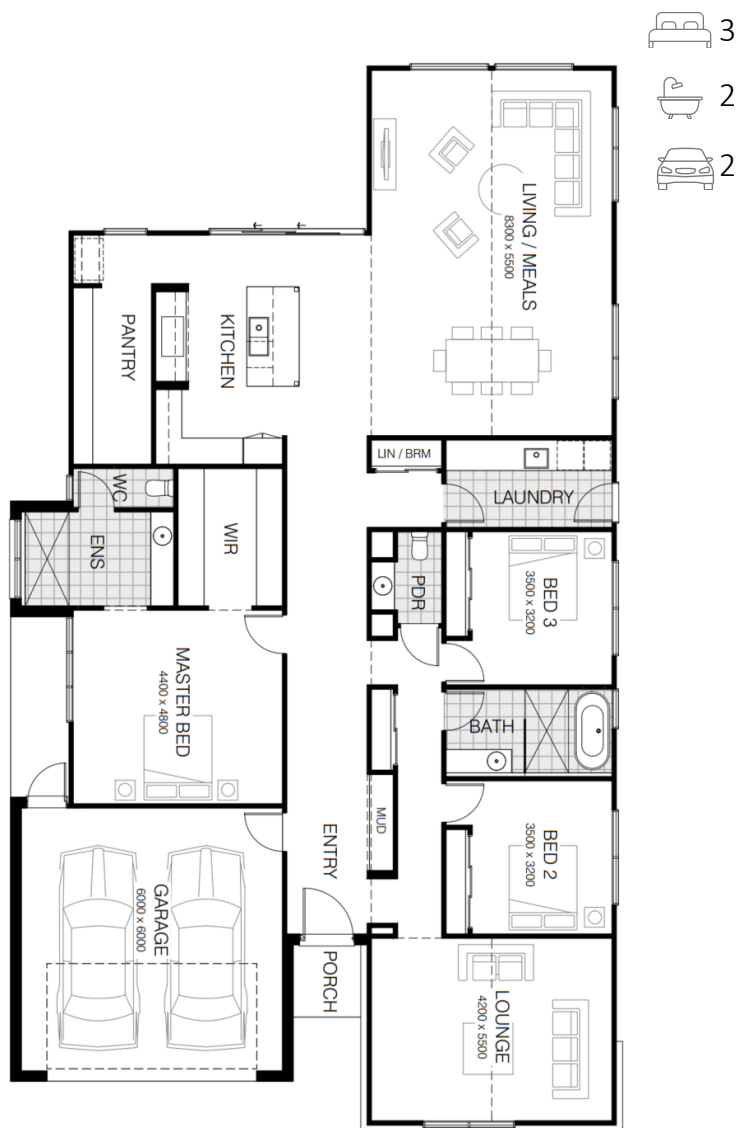
12 Hazel Drive, Warragul, VIC 3820

@roseleigh\_homes

roseleighbomes

CDB-U 52517

# \$1,638,965\*



\*Please note this is a house and land package and the home has not yet been built, nor is it under construction. Price & availability are subject to change without notice. Please note, house and land are sold separately. Images are a guide only & subject any developer approval. Site costs are estimates and are subject to final working drawings/engineering.